



**TIWAC**

**P R E S S U R E**

**G A U G E S**



**WALCHANDNAGAR**

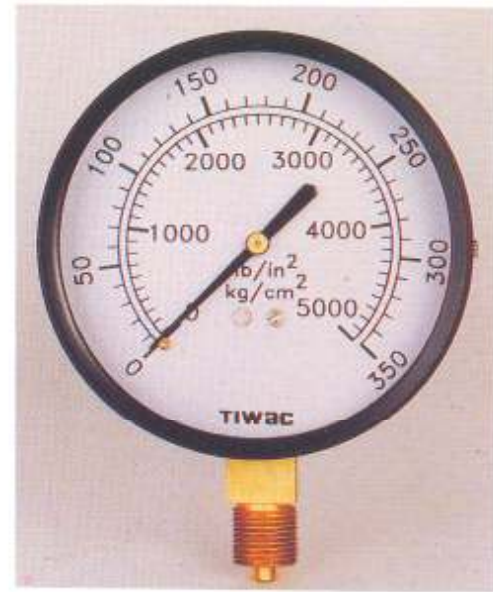
**A Tradition of  
Engineering Excellence**

# TIWAC PRESSURE GAUGES

Tiwac is a division of Walchandnagar Industries Limited, a multidivisional company catering to the requirements of a number of industries such as cement, sugar, paper, fertilizers, material handling, petrochemicals, defence, nuclear power, space research and others. It has undertaken a number of large turnkey projects in these fields and also manufactures a wide range of industrial boilers, heat exchangers, industrial gearboxes and gears, centrifugals and other hi-tech custom made products.

At Tiwac, in addition to our traditional line of clocks, we produce pressure Gauges to meet world standards. Our man-power consists of some of the best brains from the precision industries perfectly suited to the production of Pressure Gauges. Tiwac's organisational culture centres on "Quality, Precision and time." Our quality consciousness begins at the raw material stage itself, continues till the finished product leaves our factory. Our parent Company being involved in various hi-tech activities, has excellent R & D facilities which are available to us. As a result, innovative product improvement is an on-going process.

All these enable us to offer you a product which guarantees the best return for your money.



**TYPE 11**  
Bottom Connection  
Direct Mounting



**TYPE 11 OXY** ( Oxygen)  
Bottom Connection  
Direct Mounting



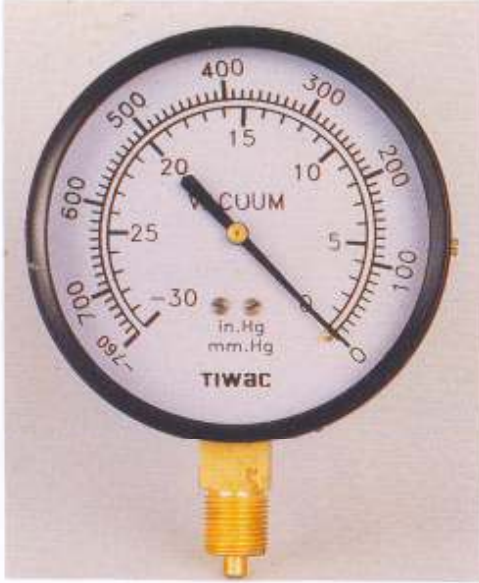
**TYPE 11** (Diaphragm Seal Gauge)  
Bottom Connection  
Direct Mounting



**TYPE 13**  
Back Connection  
Direct Mounting



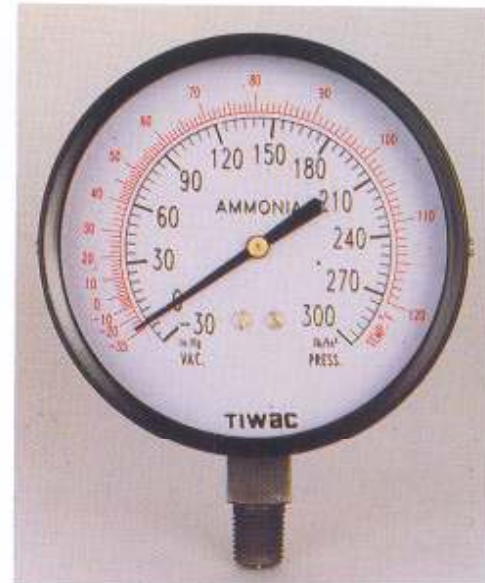
**TYPE 14**  
Back Connection  
Panel Mounting



**TYPE 11 VAC** (Vacuum Gauge)  
Bottom Connection  
Direct Mounting



**TYPE 11 F** ( Freon)  
Bottom Connection  
Direct Mounting



**TYPE 11 AMN** ( Ammonia)  
Bottom Connection  
Direct Mounting



**TYPE 11 ACY** ( Acetylene)  
Bottom Connection  
Direct Mounting.



**TYPE 11 WP GF**  
(Weather Proof Glycerine Filled)  
Bottom Connection Direct Mounting



**TYPE 12**  
Bottom Connection  
Surface Mounting



**TYPE 14 EC** (Electric Contact Gauge)  
Back Connection  
Panel Mounting



**TYPE 15**  
Back Connection  
Clamp Mounting

## STANDARD RANGES WITH LEAST COUNT

Range		Least Count		Range		Least Count	
Kg./cm <sup>2</sup>	psi	Kg./cm <sup>2</sup>	psi	Kg./cm <sup>2</sup>	psi	Kg./cm <sup>2</sup>	psi
0-1.05	0-15	0.025	0.5	0-42	0-600	1	20
0-2.1	0-30	0.05	1	0-56	0-800	0.8	20
0-3.5	0-50	0.1	1	0-70	0-1000	2	20
0-4.2	0-60	0.1	2	0-105	0-1500	2.5	50
0-7	0-100	0.2	2	0-140	0-2000	2	50
0-70.5	0-150	0.25	5	0-210	0-3000	5	100
0-14	0-200	0.2	5	0-280	0-4000	4	100
0-17.5	0-250	0.5	5	0-350	0-5000	10	100
0-21	0-300	0.5	10	0-420	0-6000	10	200
0-28	0-400	0.4	10	0-560	0-8000	8	200
0-35	0-500	1	10	0-700	0-10000	20	200

Standard pressure gauges are supplied with kg/cm<sup>2</sup> p.s.i. scales or kg/cm<sup>2</sup> only. Any non-standard requirement can be met usually with the normal lead time currently in force. Sizes and Pressures other than standard can be manufactured by special order.

Kg./cm <sup>2</sup>	Least Count	Kg./cm <sup>2</sup>	Least Count
0-1	0.02	0-40	1.0
0-1.5	0.04	0-60	1.0
0-2.5	0.05	0-70	1.0
0-4	0.1	0-100	2.0
0-6	0.1	0-150	4.0
0-7	0.1	0-250	5.0
0-10	0.2	0-400	10.0
0-16	0.4	0-600	10.0
0-25	0.5	0-700	10.0

### Compound Ranges in Hg Vac Kg/cm<sup>2</sup>

Dual Range		Single Range	
-30 to 0	10	0 to -1	0.02
-760 to 0	0.25	-1 to 1.5	0.1
-30 to 15	5	-1 to 3	0.1
-30 to 30	2	-1 to 5	0.2
-30 to 60	2	-1 to 9	0.5
-30 to 100	2.5	-1 to 16	0.2
-30 to 150	4	-1 to 25	0.5
-30 to 200	5		
-30 to 300			



Gauge Calibration

## TIWAC PRESSURE GAUGES

### SIZES AND FEATURES AVAILABLE :

■ Standard □ Optional ☐ Not available

GAUGE SIZES IN MILLIMETERS		40	50	63	75	100	150
ACCURACY	2-1-2	☐	☐	☐	☐	☐	☐
	3-2-3	■	■	■	■	■	■
CASE	Pressed Steel	■	■	■	■	■	■
	Stainless Steel	☐	☐	☐	☐	☐	☐
	Brass	☐	☐	☐	☐	☐	☐
	Chrome Plating	☐	☐	☐	☐	☐	☐
BEZEL	Pressed Steel	☐	☐	☐	☐	☐	☐
	Stainless Steel	☐	☐	☐	☐	☐	☐
	Brass	☐	☐	☐	☐	☐	☐
	Chrome Plating	☐	☐	☐	☐	☐	☐
BLOW-OUT DEVICE	Below 1000 psi	☐	☐	☐	☐	☐	☐
CONNECTION	1/8" BSP	■	■	☐	☐	☐	☐
	1/4" NPT/1/8" NPT 1/8" BSPT	☐	☐	☐	☐	☐	☐
	1/4" BSP	☐	☐	☐	☐	☐	☐
	3/8" BSP	☐	☐	☐	☐	☐	☐
	1/2" BSP	☐	☐	☐	☐	☐	☐
DIAL	Aluminium *	■	■	■	■	■	■
GLYCERINE FILLING		☐	☐	☐	☐	☐	☐
MOUNTING TYPES	11 (BCDM)	■	■	■	■	■	■
	(See Page No. 3)	☐	☐	☐	☐	☐	☐
	12 (BCSM)	☐	☐	☐	☐	☐	☐
	13 (CBCDM)	■	■	■	■	■	■
	14 (CBCPM)	☐	☐	☐	☐	☐	☐
	15 (CBCCM)	☐	☐	☐	☐	☐	☐
	16 (LBCCM)	☐	☐	☐	☐	☐	☐
MOVEMENT	Brass	■	■	■	■	■	■
	Stainless Steel	☐	☐	☐	☐	☐	☐
OXYGEN SERVICE	Degreased	☐	☐	☐	☐	☐	☐
POINTER	Micrometer adjustable	☐	☐	☐	☐	☐	☐
POINTER MTRL.	Steel	■	■	■	■	■	■
	Aluminium Anodised	☐	☐	☐	☐	☐	☐
RANGES	Vac to 1000 psi	500 psi	■	■	■	■	■
	1000 - 3000	☐	☐	☐	☐	☐	☐
	4000 - 5000	☐	☐	☐	☐	☐	☐
	5000 - 10000	☐	☐	☐	☐	☐	☐
	Compound upto 300	☐	☐	☐	☐	☐	☐
SERVICES	Acetylene/Oxygen	☐	☐	☐	☐	☐	☐
	Ammonia	☐	☐	☐	☐	☐	☐
	Freon	☐	☐	☐	☐	☐	☐
SHANK	Brass	■	■	■	■	■	■
	Stainless Steel **	☐	☐	☐	☐	☐	☐
BOURDON TUBE	"C" Type upto 1000 psi	■	■	■	■	■	■
	Coiled above 1000 psi	☐	☐	☐	☐	☐	☐
BOURDON TUBE MTRL.	Brass	■	■	■	■	■	■
	Stainless Steel	☐	☐	☐	☐	☐	☐
WINDOW	Plastic (Pushfit)	■	■	■	■	■	■
	Glass	☐	☐	☐	☐	☐	☐

Note : \* STANDARD FEATURE : White background with black markings as standard. Other optional colours or custom-built can be provided at little extra cost.

\*\* SHANK : Stainless Steel only available for bottom connection for all sizes and lower back connection from size 63 to 150.

Due to our policy of continuous improvement, we reserve the right to alter specifications at any time without prior notice.



Cyclic Test



Factory View



Manufacturers :  
**WALCHANDNAGAR  
INDUSTRIES LIMITED**

TIWAC DIVISION,

AUTHORISED DEALER