



WALCHANDNAGAR

A Tradition of Engineering Excellence

WALCHAND TECHNOLOGY GROUP

Powered by knowledge, driven by experience...



Walchand Technology Group (WTG)

Walchand Technology Group is an Advanced Technology & Engineering Solutions Group powered by a dynamic and dedicated team of qualified and trained engineering professionals, with a judicious mix of experience in different fields and engineering projects. The engineers use cutting edge design tools and resources for engineering and analysis, that enable compliance with the most stringent international standards in design, manufacture, testing and commissioning. This ensures that our solutions spell quality, ease of operation and long-term reliability. The Group also has access to expert panels of agencies and consultants with specific domain expertise in civil engineering, nuclear engineering, electrical engineering, as well as controls and instrumentation.



Equipped to deliver

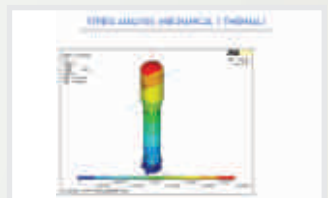
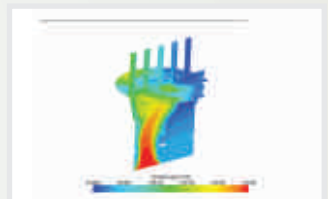
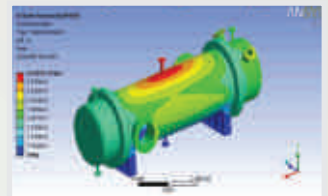
Design and engineering is the most critical area of advanced technology. Qualified, experienced personnel, Software and hardware tools available at WTG facilitates to undertake the design engineering.

Software and Information Resources

- Ansys, ProE, AutoCad, Fluent, HTRI, Ceaser-II, In tools, Uni Graphics, Abacus, PV- Elite, HyperMesh, Staad Pro, Tekla & SolidWorks
- Technical library consisting of codes and standards such as ASME, ASTM, TEMA, BS, DIN, GOST, RCC etc
- ISO 9001:2000 compliant procedures

Core skills at WTG

- Process system design
- Plant layout and foundation design
- Equipment design
- Testing of equipment and sub-systems
- Integration of systems
- Specific safety analysis and validation studies
- Risk and reliability analysis
- Erection, Procurement and Commissioning of power plant
- Controls and instrumentation
- Mechanical and civil structures
- Design of infrastructure and test facility



Energy solutions

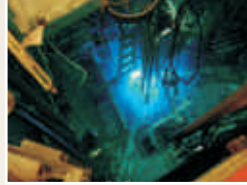
PHWR, FBR,
PWR,LWR



NUCLEAR WASTE
MANAGEMENT



NUCLEAR FUEL
MANAGEMENT



ITER
(FUSION REACTOR)



NUCLEAR POWER PLANT

ITER



CONTROL AND INSTRUMENTATION



WIND ENERGY



THERMAL POWER PLANT



SOLAR ENERGY

DEFENSE AND AERO SPACE



WTG has harnessed in-house knowledge and ability garnered from over 100 years of engineering achievements and experience, to provide a complete range of consulting engineering services.

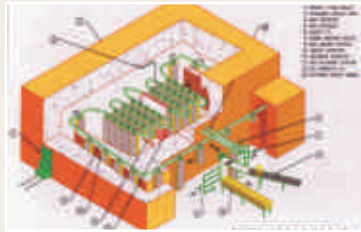


A Tradition of Engineering Excellence

Agro and Irradiation plant



SUGAR CANE
HARVESTER



IRRADIATED FOOD AND
MEDICAL EQUIPMENTS

WTG is designing Radiation Processing Facility on Turnkey basis (including, clearances by the regulatory bodies, training to personnel, technical know-how, facility erection and commissioning,)

Projects being undertaken for organisations:

- BARC ■ NPCIL ■ NTPC
- ONGC ■ HAL ■ MESB
- APEDA, State agri boards,
Medical supplies Producers
- ITER(FUSION REACTOR)

Water Treatment Solutions.

Desalination

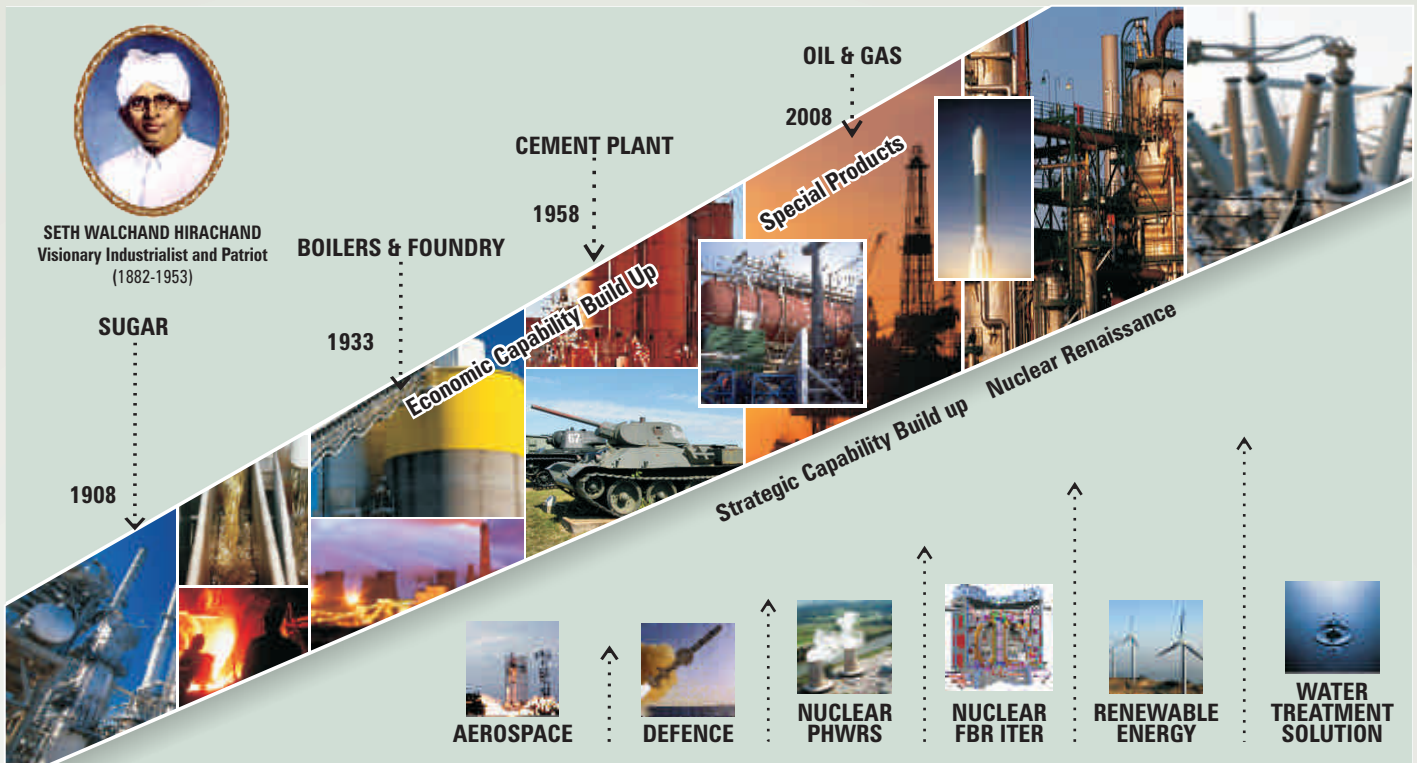
- Multi Stage Flash (MSF)
- Multi Effect Distillation (MED)
- Low Temperature Evaporation (LTE)
- Thin Film Membranes (TFM)

Waste Water Treatment

- Bio Technologies



Progress beyond boundaries



Walchand Technology Group (WTG)

Walchandnagar Industries Ltd is a diversified High-tech Heavy Engineering Project Execution company and undertakes many high technology projects for Defence, Nuclear and Aerospace sector in India.

It also has a strong & proven EPC turnkey project capability in many diverse core sectors such as Cement, Energy, Mineral Processing, Bulk Material handling, Oil & Gas, Petro Chemicals and Sugar plants.



Walchand Technology Group

Walchand Technology Center

15/1/B - 2, G. A. Kulkarni Path, Kothrud, Pune - 411038 Maharashtra, INDIA

Tel.: +91 (020) 25306100. Fax: +91 (020) 2530 6103 E-mail: at-esg@walchand.com

A Tradition of Engineering Excellence